

REV 1-5

EQUIP. TYPE 580400 EXP. NO.

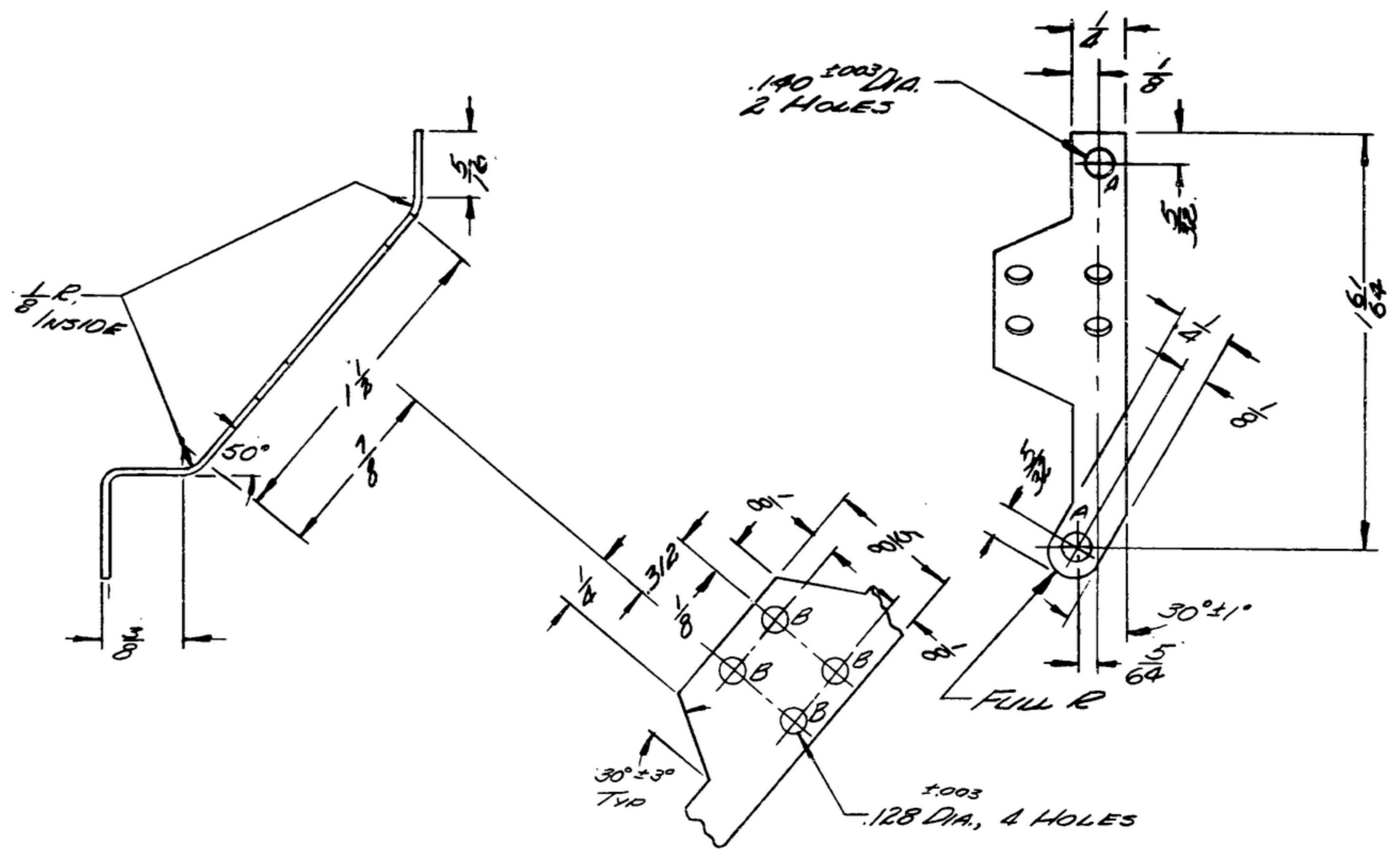
Coll. 582-3617-003

NOTICE: WHEN DIMENSIONS, SPECIFICATIONS, OR OTHER DATA ARE USED FOR ANY PURPOSE OTHER THAN IN CONNECTION WITH A SPECIFICALLY DESIGNATED PURCHASE ORDER, THE BUYER STATES NECESSARILY THEREBY ASSUMES RESPONSIBILITY FOR ANY CONSTRUCTION UNAUTHORIZED AND THE FACT THAT THE GOVERNMENT MAY HAVE FORMULATED, PROVIDED, OR IN ANY WAY SUPPLIED THE SAID DIMENSIONS, SPECIFICATIONS, OR OTHER DATA IS NOT TO BE CONSIDERED BY BUYER AS OPERATING AS OR ANY MANNER LIMITING THE RIGHTS OR ANY OTHER PARTY OR COMPANIES, OR CONFERS ANY RIGHTS OR PRIVILEGES TO BUYER. THIS, USE, OR SELL ANY PATENTED INVENTION THAT MAY IN ANY WAY BE RELATED THERETO.

THIS DOCUMENT HAS BEEN APPROVED BY THE GOVERNMENT AND MAY BE REPRODUCED AND USED IN CONNECTION WITH ANY GOVERNMENT PURCHASE OR CONTRACT OR OPERATION.

\* FOR INFORMATION ONLY. CONTRACTOR MAY AT HIS OPTION DEVIATE FROM THESE PROCESS DETAILS.

REVISIONS			
SYM	DESCRIPTION	DATE	APPROVAL



CRES, CLASS 1, COND B, FINISH 1 PER SPEC QQ-5-766 .031 THICK.

FINISH: E300 PER SPEC MIL-F-14072  
 \* COLLINS 580-0025-00

NOTES:  
 1. ALL INSIDE BEND RADII 3/64 MAX, UNLESS OTHERWISE SPECIFIED.

COLLINS PART NO.	ITEM	REQD	PART NO.	DESCRIPTION	MATL	MATL SPEC
------------------	------	------	----------	-------------	------	-----------

LIST OF MATERIAL

COLLINS PART NO. 580-0563-003

580-0363-006	1	SM-D-283269	580-283269
COLLINS NO.	QTY	NEXT ASSY	USED ON

UNLESS OTHERWISE SPECIFIED:  
 DECIMAL DIMENSIONS INCLUDING HOLE SIZES MAY VARY ±.008  
 FRACTIONAL DIMENSIONS INCLUDING HOLE SIZES MAY VARY ±1/64  
 MACHINED ANGLES MAY VARY ±.1°  
 SHEARED ANGLES MAY VARY ±.25°  
 BROKEN ANGLES MAY VARY ±.1°  
 ECCENTRICITY BETWEEN ANY DIAMETERS ON THE SAME CENTERLINE SHALL NOT EXCEED .010 TOTAL INDICATOR READING.  
 ALL DIMENSIONS ARE FINISH DIMENSIONS INCLUDING APPLIED FINISH AND ARE GIVEN IN INCHES.

COLLINS RADIO CO.  
 14218 - PH - 51 - 23  
 SIGNAL CORPS  
 REVIEWED PME  
 APPROVED HLV  
 DATE 7 JAN 57 SCALE 2/1

DEPARTMENT OF THE ARMY  
 SIGNAL CORPS ENGINEERING  
 LABORATORIES  
 FORT MONMOUTH NEW JERSEY  
JM-C-283269